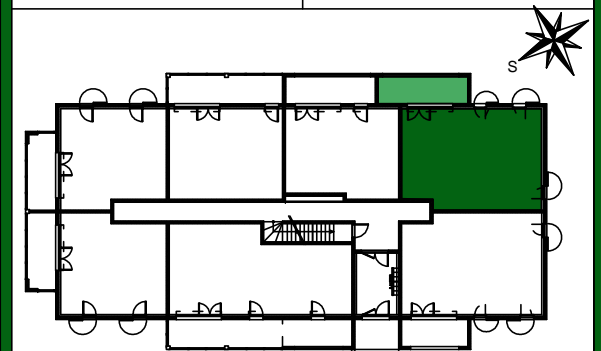


T3 NIVEAU RDC **B-012**

Date : 07/03/2018

Mise à jour:/..../...



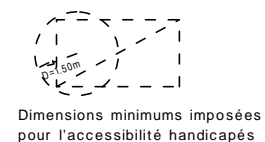
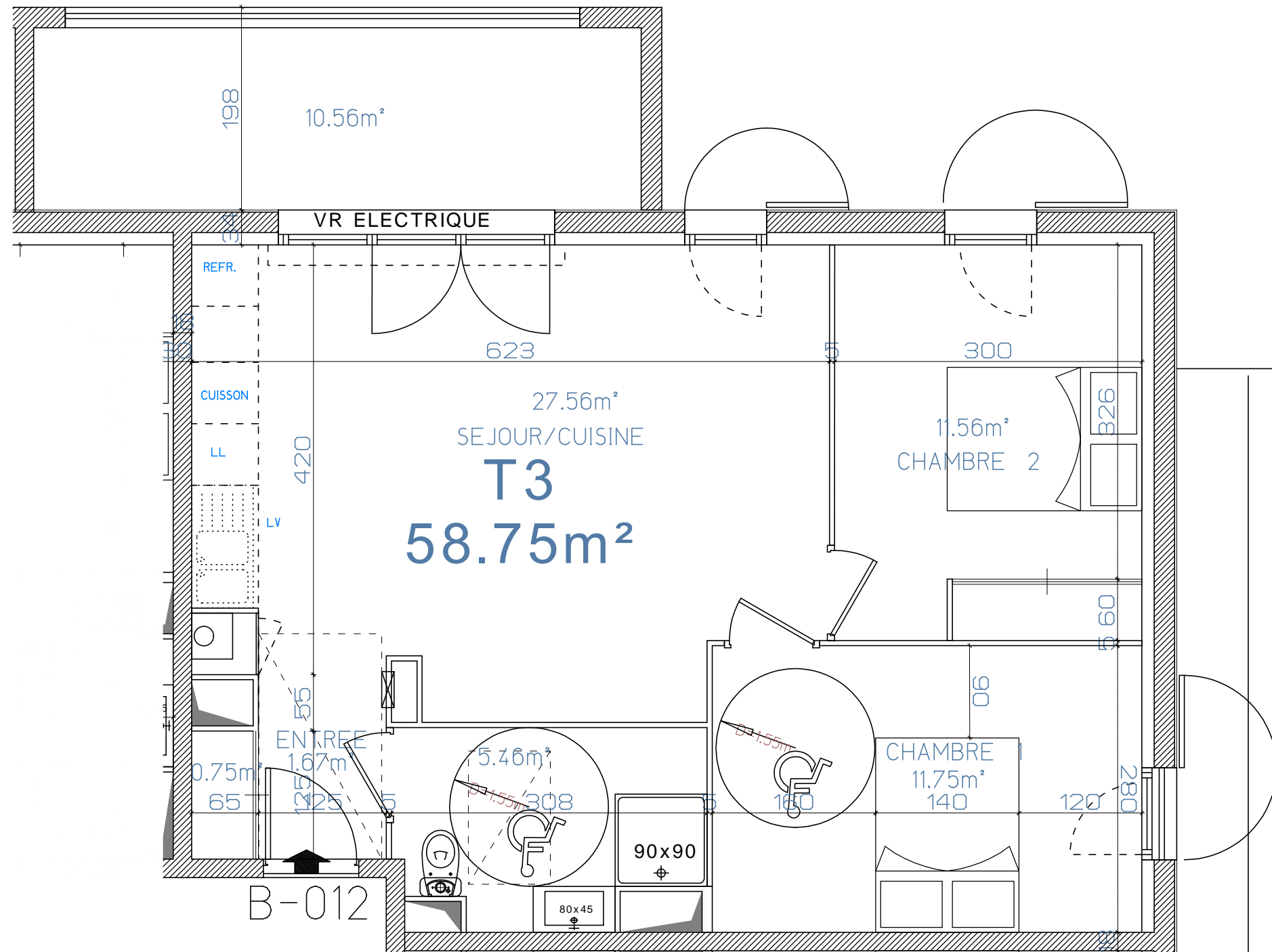
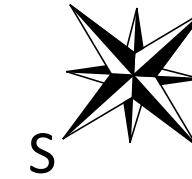
BATIMENT B

SURFACES HABITABLES

ENTREE/PL/SEJOUR/CUISINE	29.98 m ²
CELLIER	m ²
CHAMBRE 1	11.75 m ²
CHAMBRE 2 / PL	11.56 m ²
SALLE DE BAINS + WC	5.46 m ²

TOTAL HABITABLE 58.75m²

TERRASSE 10.56 m²



- CHAUDIÈRE
- TABLEAU ELECTRIQUE

